



---

# BPA Integration – User's Guide

Author: Annette Kord  
Revision Date: 09/17/08

# Table of Contents

<i>Introduction</i> .....	3
<i>Before You Start</i> .....	3
Software Requirements.....	3
<i>Getting Started</i> .....	3
Setting Up.....	3
Linking TMP Tenants and Member #s	4
Importing Transactions.....	5
<i>Technical Details</i> .....	6
Marina.INI changes .....	6
Table BPA_DATA added.....	6

# Introduction

This User's Guide describes the Integration between The Marina Program and BPA software's POS package.

## Before You Start

### Software Requirements

MDAC (Microsoft Data Access Components) can be downloaded from the Microsoft sight for free if it's not installed already.

The Marina Program **v4.30** must be installed. (Note New DDFs are required).

The BPA software must be installed including,  
The ODBC driver for Visual Foxpro installed  
The DSN named BPA created pointing to the BPA folder.

## Getting Started

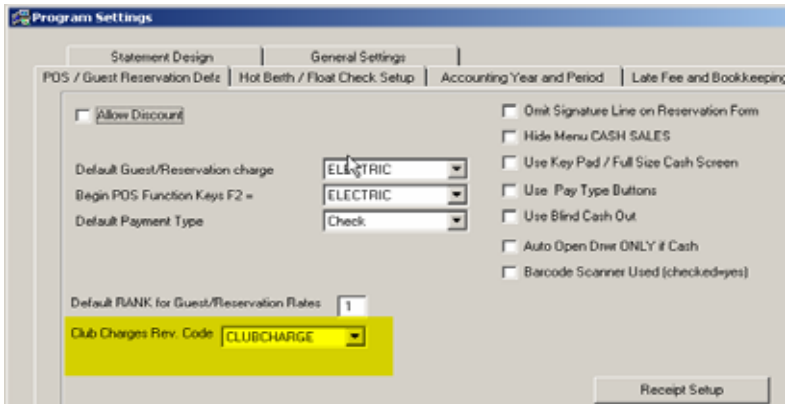
### Setting Up

Please make the following modifications to your Marina.INI configuration file located in your data folder (normally ccMarina on a server).

A new section entitled POS Interface has been added the text shown below needs to be added as follows (Note that this section replaces the [BPA] section used in the prior TMP version).

**[POS Interface]**  
**BPA=1**  
**Aloha=0**  
**LogPath=**  
**RC1=**  
**RC2=**  
**FileToImport=**

Visit TMP's Program Settings option located under Lists-Program Settings – POS/Guest Reservations tab, and verify/setup the revenue code the BPA charges will be posted against,



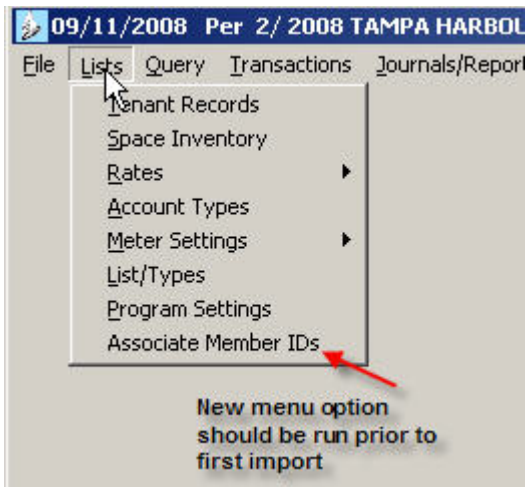
## Linking TMP Tenants and Member #s

If you already have Member IDs entered in your tenant records as shown below,

The screenshot shows a 'Tenants' form with the following fields and values:

- First Name: Jim
- Last Name: Aikin
- Extra: Jan Aikin
- Address: 123 Waterside Drive
- City/St/Zip: Tampa, FL, 33647
- H: 813-555-1212
- W: 813-955-4141
- Boat Information: Name SEARAY, Length 26.5, Beam 8.4, Mmbr#: 4013

you will need to run the function entitled Associate Member IDs it can be found under the Lists menu Lists – Associate Member IDs



For new member ids entered TMP will automatically do the association so you only need to run this function as part of the initial setup.

## New Member ID Search

A new Member id search is provided in the select/find window. This requires the initial association of Member IDs as described in the above section. To find by Member ID, select Member ID as the column to search on and enter the Member ID #. This works similar to the Record # search.

Find or Enter New Record

Click on Column

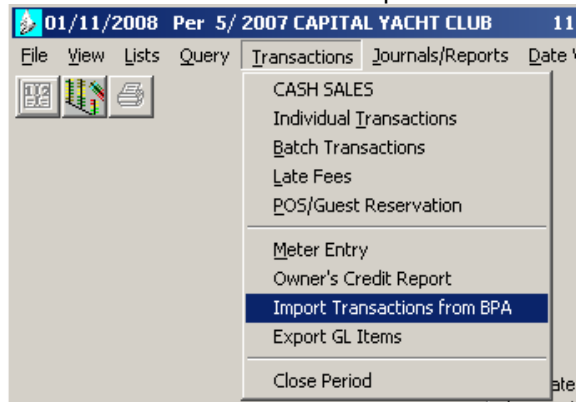
Click on Character(s) to Find

Find: 4013

Find VACANT SPACE for current Date View.  
Enter LENGTH for search, type Enter key to view.  
Click Guest/Tenant for New Form, or Cancel/ESC to use original entry (w/ Default Dates)

## Importing Transactions

From The Marina Program's menu choose Transactions-Import Transactions from BPA,



The following dialog window will display,

Club Charges Import (BPA)

Import BPA On Account Transactions

Start Date: 10/01/2007 End Date: 11/30/2007

Log File

Where should the log file be written

h:\marinas\capitalyachtclub

Log File Name: 20071130.log

Import Close

The start date and end date default to the current program date assuming the import will be run daily. Note: That it is not a requirement to run the import daily you can import as many days as you'd like using the start and end date parameters.

The Log file created will contain any error messages along with a listing of any transactions from BPA that could not be matched with a transaction in TMP. The log file location can be defined by the user, the log file name will default to the end date of the range chosen in the format YYYYMMDD.log.

## Technical Details

### Marina.INI changes

The following section has been added (also Getting Started-Setting Up above)

#### [POS Interface]

**BPA=1**  
**Aloha=0**  
**LogPath=**  
**RC1=**  
**RC2=**  
**FileToImport=**

These items will be populated with values when setting these options within TMP (Note: The section and items need to be added prior to usage).

### Table BPA\_DATA added

Note this table was added in v4.36 so BPA\_DATA.DAT is not distributed with the v4.37 upgrade package (to prevent overwriting any existing data). If you are installing this interface for the first time with version 4.37 you will need to copy the BPA\_DATA.NEW file to BPA\_DATA.DAT.

The table BPA\_DATA (data file BPA\_DATA.dat) we created to track the imported transactions. This was done to eliminate the possibility of duplicate transactions being imported.

The layout is as follow,

Column Name	Description
Tran_Nbr	The BPA transaction number
Guest	The BPA guest number
OnAccount	The Member ID #
OnAcct_Amt	The Amount of the Charge
OnAcct_Tip	The amount of tip placed on the charge (OnAcct_Amt includes the tip)
Date_Out	The Date of the charge
Time_Out	The Time of the charge
NUMB	The Marina Program Tenant Record #

This file has two indexes one on the Tran\_Nbr and Guest column and one on the NUMB column.

This requires new DDFs and the new data file BPA\_DATA.DAT be added.