

Configuring TDS Ranger for Mobile Meter Reading and Dock Check Utility

STEP 1: Load Active Sync on Laptop

Your PC requires Microsoft ActiveSync 4.1 or higher

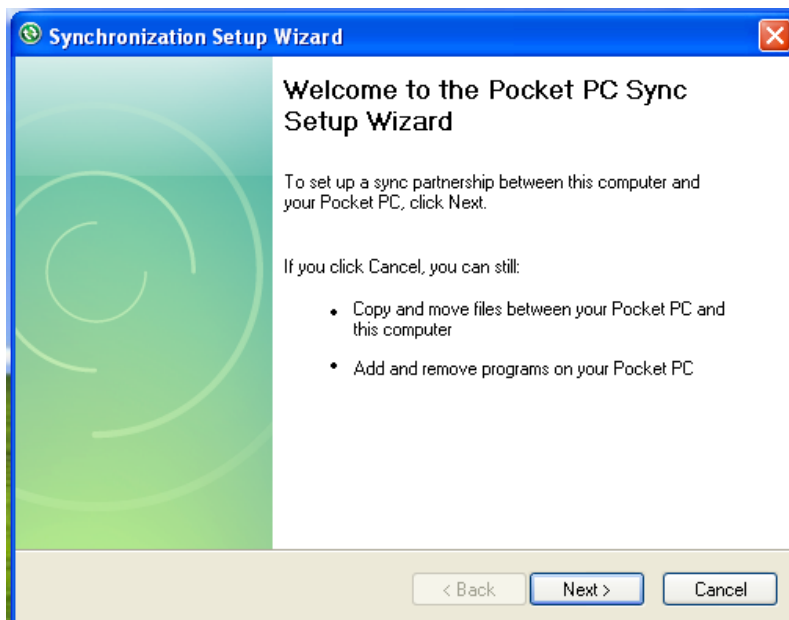
NOTE: The companion disk that comes with the TDS Ranger has an installation program on it that requires Adobe Flash Player on it. After trying for an hour to get this to install I gave up and went directly to the Microsoft website:

www.microsoft.com/windowsmobile/default.aspx

Search for the Microsoft ActiveSync download and load directly from there. Follow the prompts to install.


STEP 2: Connect the Ranger to the PC

Connect the TDS Ranger while powered on to the PC's USB port.



If you are simply interested in installing software on your unit, or in transferring files between your unit and your PC, click **Cancel**. (**NOTE:** You will do this each time you connect the Ranger to the PC).

STEP 3: Load Programs onto Ranger

Once connected select  Explore

Copy the files onto the TDS Ranger

For the Dock Check Utility

- AXPack.ppc
- RuntimeFat.ppc
- Handy1
- WC Dock Check.Ink
- Wc_logo
- wcHB.exe

For the Meter Reading Utility

- AXPack.ppc
- RuntimeFat.ppc
- Handy2
- WC Meter Reading Utility
- wc_logo
- wcHH.exe

Install the NS Basic/CE Runtime and NewObjects AXPack1.

- Refer to the document Installing NBASIC on the Ranger.pdf.

STEP 4: Place Program in Start Menu

- Copy the shortcut files into the Windows\Start Menu
- On the Ranger, from the Start Menu select Settings
- From the Personal tab select Menus icon
- The programs loaded in Step 3 should appear. Select the check boxes next to them.
- When you now hit the Start button the programs loaded above should appear.
- See the corresponding documents for running the applications.