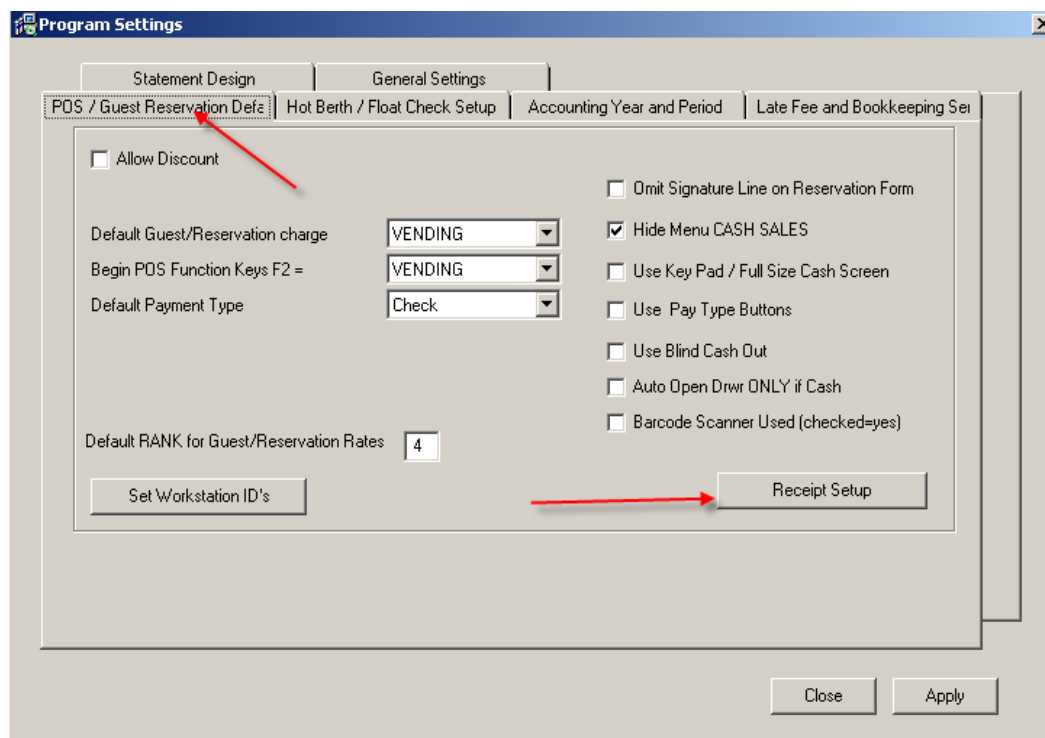
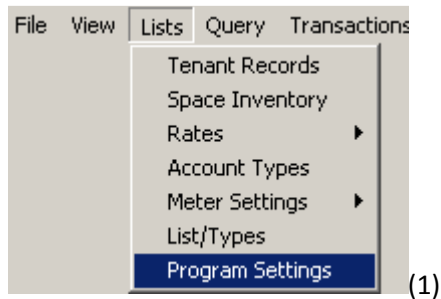


Setting up your Receipt Printer

Receipt printer control codes are entered into TMP by clicking **Lists-Program Settings** (1) from the main menu, click on **the POS/Guest Reservation Defaults** (2) tab. Click the button entitled **Receipt Setup** (2).



The Receipt Setup window will display,

Receipt Printer Codes

Enter characters as decimal numbers separated by commas

Cash Drawer/Receipt Printer Port
Choose port receipt printer is connected to.
LPT1:

Setup Receipt Printer Codes

Initialize Printer: _____

Feed & Cut Paper: 29,86,1 _____

Open Cash Drawer: 27,112,0,100,250 _____

Endorsement: _____

Use Default Codes

Printer codes should be entered in decimal format delimited with commas. For example the Epson TM-T88 Receipt printer's initialization codes are 27,64. Click the Test button to test your port connection and printer code setup.

Test

More Receipt Options

Use Short Receipt for all Customers Print Receipt on Payment

Number of Copies: 1

Close Apply

Choose the port (LPT1:, COM1: etc) that the receipt printer is physically connected to on this workstation. *Note:* the receipt printer/cash drawer must be physically connected to this workstation.

As shown above and in our Printer Control Codes table below, codes are entered separated by commas, if your receipt printer is listed in the table below use the codes below for your receipt printer. If your receipt printer is not listed below the codes can usually be found in the users manual or technical reference that goes with your particular printer.

After entering codes the Test button may be used to test the receipt printer.

NOTE: If you are upgrading from an older version of TMP and you are not changing your receipt printer or cash drawer, click (to check) the checkbox entitled **Use Default Codes** this will then ask you if your receipt printer is Epson or Bell compatible choose one and the default codes from these printers will be assigned, click the test button to verify you can print a receipt.

Click the **Apply** button to save any changes made.

Printer Control Codes Table

Model	Open Drawer 1	Open Drawer 2	Autocutter Full Cut	Autocutter Parial Cut
Citizen CBM-230	27,112,0,50,250	27,112,1,50,250	N/A	N/A
Citizen CBM-231	27,112,0,50,250	27,112,1,50,250	27,105	27,109
Citizen CBM-232	27,112,0,50,250	27,112,1,50,250	N/A	N/A
Citizen CBM-233	27,112,0,50,250	27,112,1,50,250	27,105	27,109
Citizen CBM-253	27,112,0,50,250	27,112,1,50,250	27,105	N/A
Epson TM88III	27,112,0,25,250	N/A	27,109	N/A
Epson TM88IIIP	27,112,0,64,240	N/A	27,109	N/A
Epson TM88IV	27,112,48,55,121	N/A	27,109	N/A
Epson M188D	27,112,48,55,121	N/A	27,112,0,5,250	N/A
Epson T-H6000	27,112,48,55,121	N/A	N/A	N/A
Samsung STP-131	27,112,0,48,50	N/A	N/A	N/A
Samsung SRP 270	27,112,48,55,121	N/A	27,109,0,25,250	N/A
Samsung SRP-350	27,110,0,25,250	N/A	N/A	N/A
Star TSP 100	7	N/A	27,100	N/A
Star TSP 200	27,7,11,55,7	27,100,48	N/A	N/A

More Receipt Options

Additional Receipt options are provided

More Receipt Options

Use Short Receipt for all Customers
 Print Receipt on Payment

Number of Copies:

Use Short Receipt for all Customers if checked will show the same receipt for Tenants/Guests as it does for Cash customers meaning no current balances are shown, the receipt only contains information relating to the current transaction.

Print Receipt on Payment if checked will automatically print a receipt when the Payment is entered.

Number of Copies: set the number of receipt copies you want to print. Default is 1.