

Symptoms

When starting The Marina Program you are presented with a series of error messages like the following,

(clcGlobFiles.INIT) Error opening POS C:\ccmarina\Tenants.dat Error code: 161

Affects

New installs of Pervasive PSQL v8.x Workgroup version where a permanent license key was **not** installed.

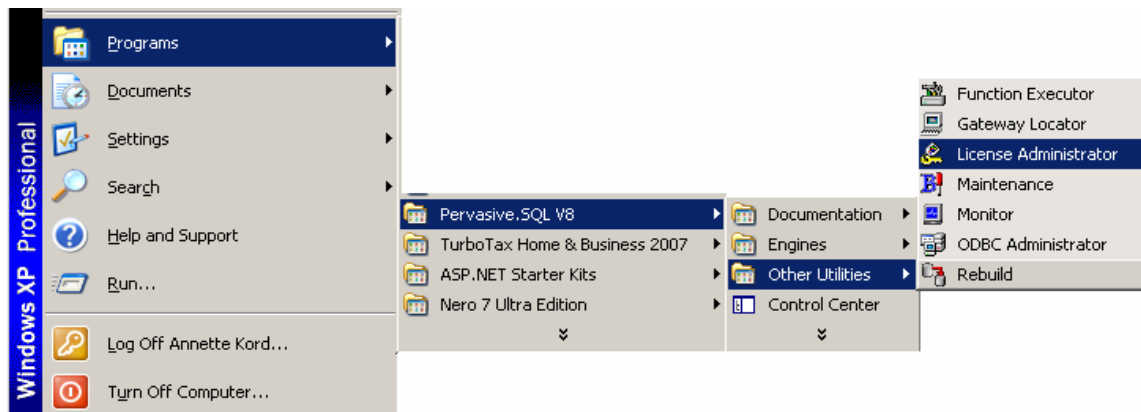
Cause

Usually caused by a new install of Pervasive PSQL v8.x on a new machine. When Pervasive is initially installed it installs (by default) a temporary license key, this license key is good for 90 days. When the 90 days comes to an end, the error 161 is produced.

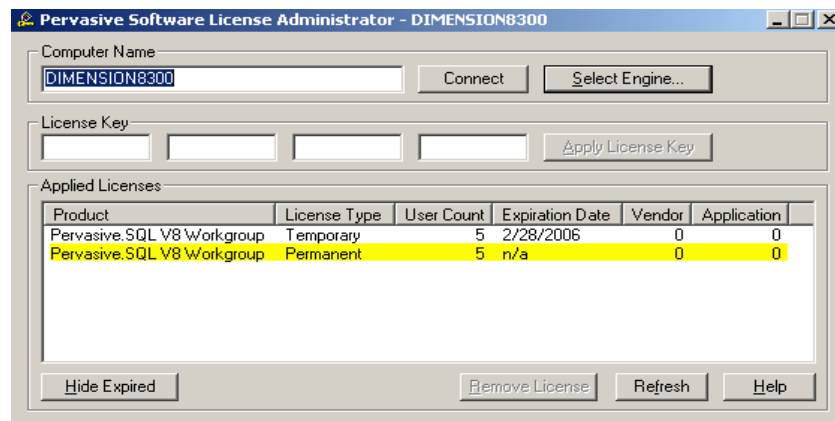
Cure

Install a permanent license key using the instructions below.

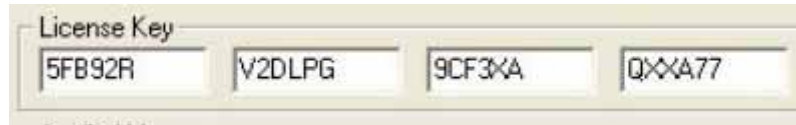
Start – Run – Program Files – Pervasive.SQL v8 – Other Utilities – License Administrator



Make sure you have a Permanent License Key installed,



If you don't add the following Permanent License Key,



Again, these steps need to be performed on each workstation where Pervasive SQL was installed..