

Windows Vista Pervasive Instructions

Before reading this document please be advised that Watch Captain, LLC cannot be held responsible for any technical issues outside the agreed support of our software (i.e. Problems with your operating system, spyware, or viruses that might stop our applications from functioning normally).

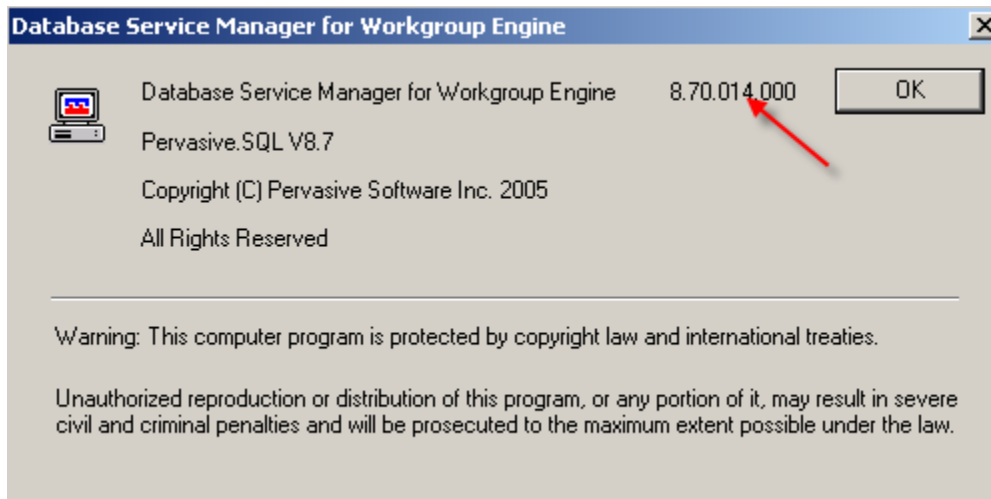
The following is a step-by-step instruction guide showing how to prepare Windows Vista and the Pervasive Database Engine for the running of The Marina Program. This document will help eliminate the receiving of error 3012.

Before You Begin:

Before you begin this process you must find out the version of Pervasive you are running. To do this,, double click the Pervasive database icon in your system tray (by the clock in the lower right-hand corner of the desktop).



Review the review the version number in the in the upper right-hand corner of the window that opens when you double click the icon

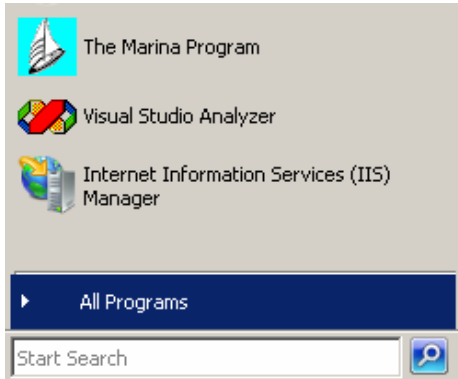


If your version starts with 9.5 proceed to **Procedure 1**

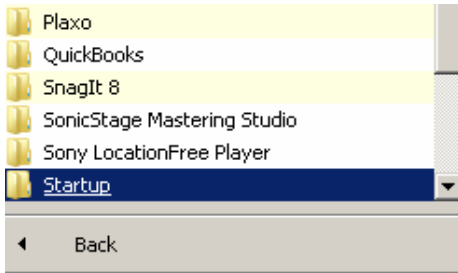
If your version starts with 8.7, 8.6, 8.1, 8.0 proceed to **Procedure 2**

Procedure 1: Compatibility Mode (Version 9.5 Only)

1. Click start and select All Programs



2. Find the folder entitled Startup from the list and click to open it



3. Inside this folder you should find the Pervasive Icon (figure 3a). Right click on the Pervasive icon and select Properties from the context menu (figure 3b).

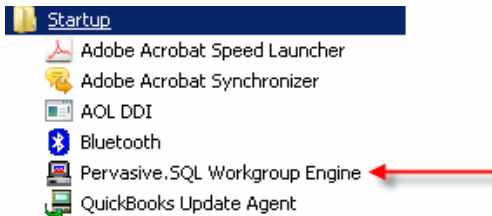


figure 3a

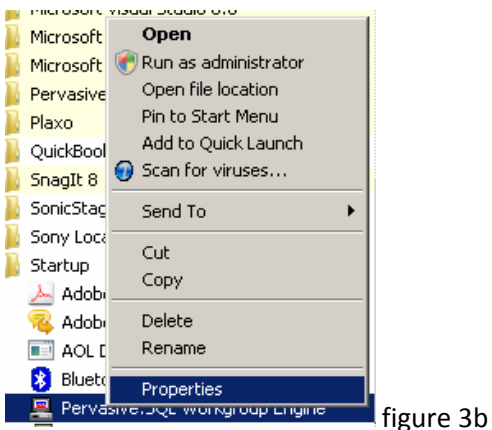
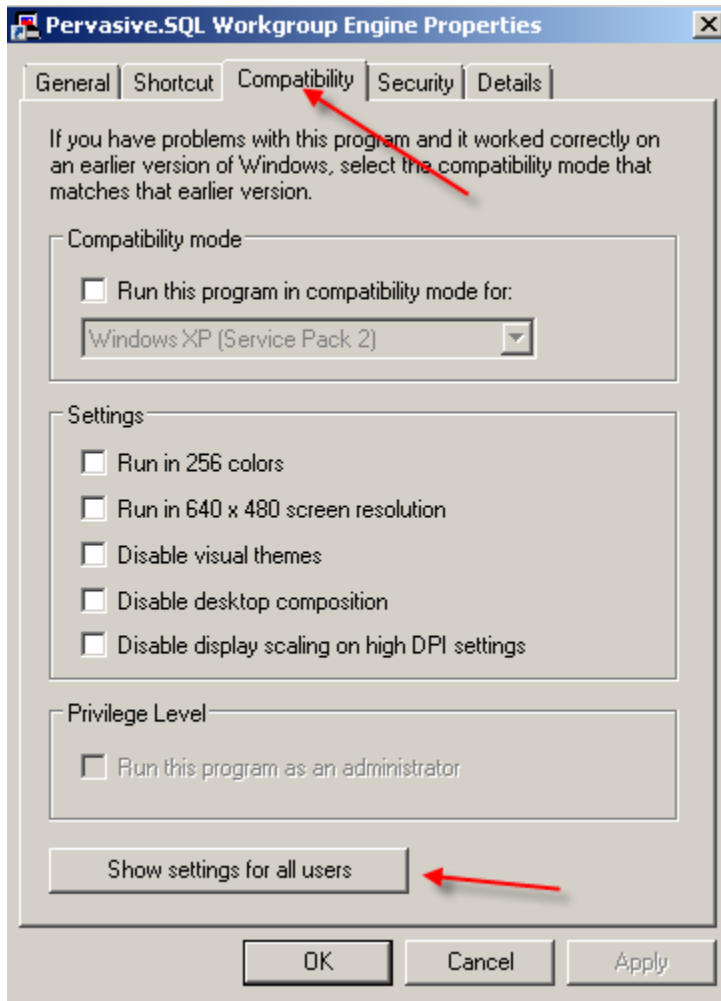
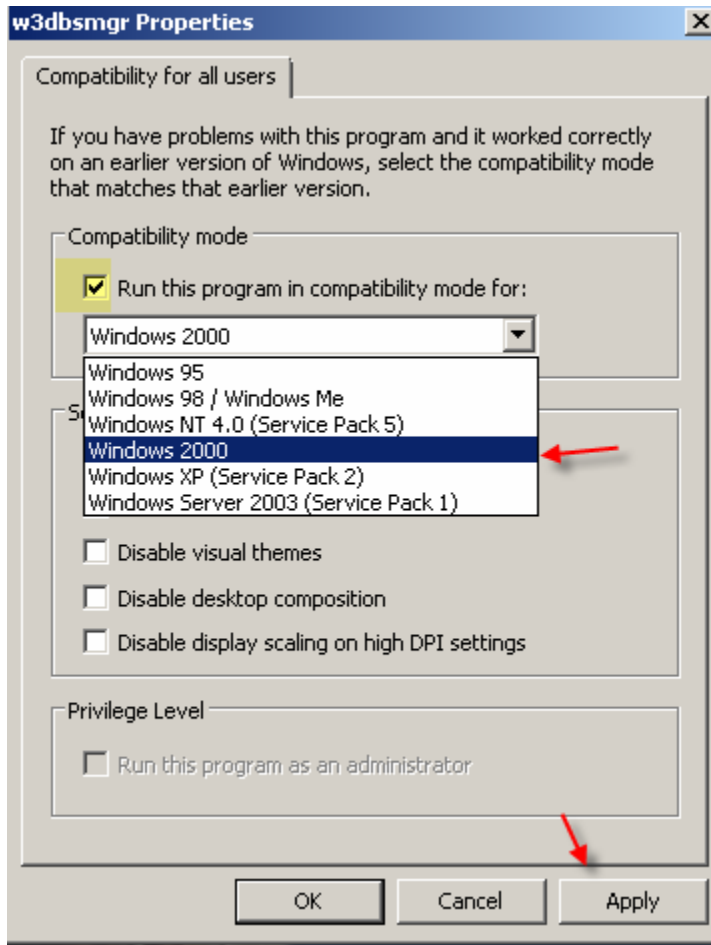


figure 3b

4. A new window will open. Click the compatibility tab at the top of the window and click the **Show settings for all users** button



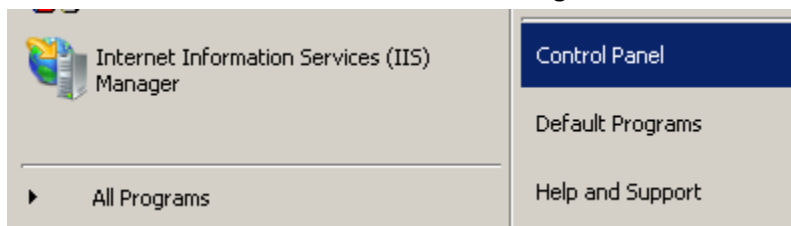
5. A new window might open up asking your permission to continue. Click the continue button. A new window will open showing the following,



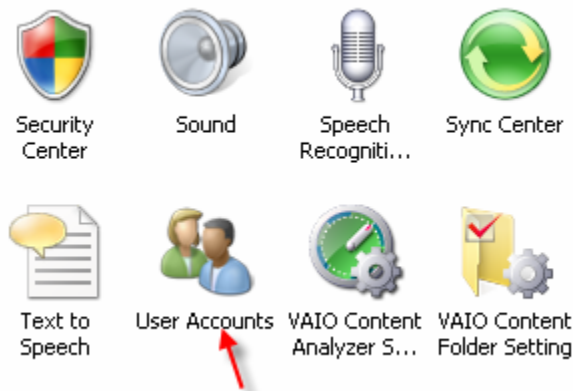
6. Place a check in the box labeled **Run this program in compatibility mode for:** and select Windows 2000 from the list shown above.
7. Click Apply, then click OK
8. Restart your computer. The Marina Program should run without error.

Procedure 2: Disabling the User Account Control (UAC) All Ver.

1. Click on start and click Control Panel on the right hand side.



2. In the control panel double-click User Accounts

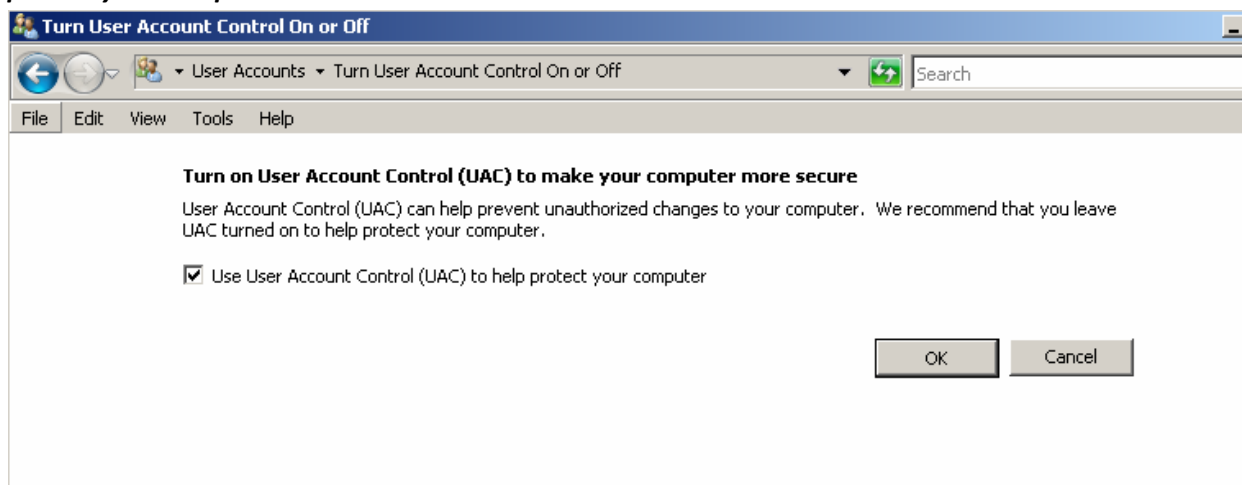


3. A new window will open showing your User account. On this window you should see a link that says Turn User Account on or off. Click this link.

Make changes to your user account



4. A dialog will pop-up asking your permission to continue, please click continue.
5. The next window shown will have a check box entitled **Use User Account control (UAC) to help protect your computer** uncheck the check box. Click OK.



6. Please restart your system. You should be able to use The Marina Program without errors.